



FARNESE MASTERWOOD AUSTRALIA® PTY LTD

Woodworking Machinery Sales, Service & Parts



FARNESE EDGE BANDER FM310



DESIGN FEATURES

SINGLE SIDE EDGE BANDING MACHINE

IDEAL FOR INDUSTRIAL OR ARTISAN USE

COMPACT STURDY MACHINE

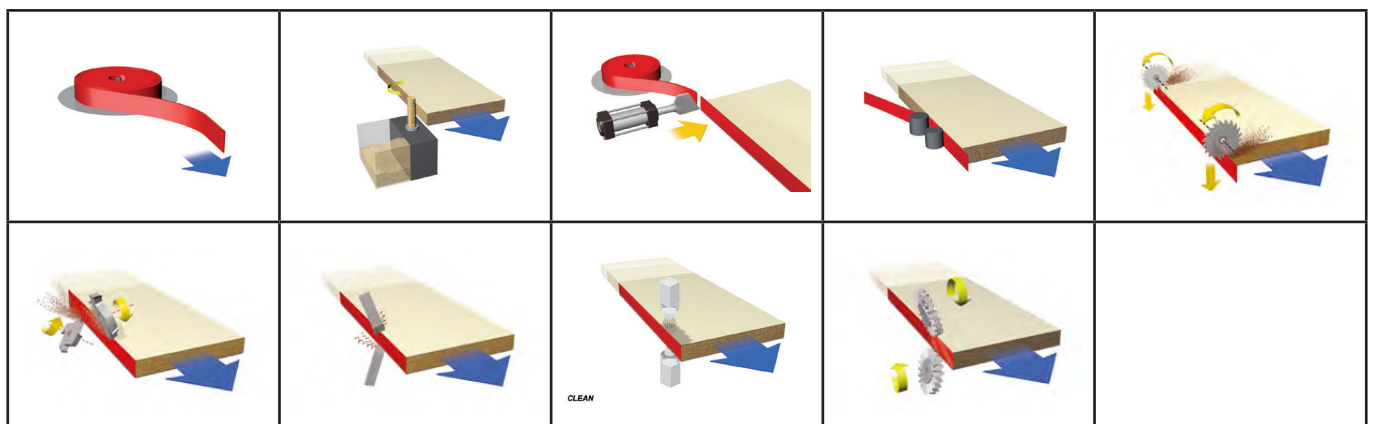
QUICK HEATING GLUE POT

APPLICATION OF PVC, ABS, MELAMINE, VENEER AND SOLID WOOD EDGES

THE UNITS ARE ADJUSTED WITH PRESSURE BAR PROVIDED WITH A DOUBLE ROW OF WHEELS.

Together, Farnese Masterwood have a combined history of over 70 years and the recent merger means that the synergy of experience and knowledge brought in by each partner brings a lifetime of expertise to all aspects of the stone and wood cutting industry. Their combined commitment to their successful legacy in their respective fields brings a new energy to the future of stonemasonry and woodworking in Australia and across the world.

Visit the Farnese MasterWood showroom to view the complete range of professional machines, or contact us for professional advice and solutions for your stone cutting and woodworking business.



MAIN FEATURES

- Machine structure in ribbed electrically welded steel, to grant high rigidity.
- The machine has a compact design, is versatile and user friendly.
- Extensible panel support with roller for large-sized panels.
- Built-in electrical cabinet with main switch.
- All working units are protected by a cabin with wide opening allowing excellent view of the inner parts.
- Machine input and output emergency mushroom buttons.
- All motors turn at 12,000 RPM and are controlled by an inverter of suitable power according to machine configuration.

PANEL CONVEYING SYSTEM

- Track movement is made by a robust chain, by means a proper power, orthogonal geared motor, feed rate 16 m/min.
- High coefficient of friction rubber-coated pads are fitted on the chain in order to grant maximum panel adherence;
- Steel upper pressure beam with double row of wheels
- A track guide with flat round profile is fitted along the upper beam to obtain maximum precision and straightness even with loadings from the side.

CONTROL PANEL

- The control panel is placed in a very convenient and functional position. Color touch screen and start and operating controls.
- Control of the machine and of the related units is made by an electronic control;
- On the PLC display the following data are displayed:
 - feed rate,
 - glue tank temperature,
 - program type selected by the operator

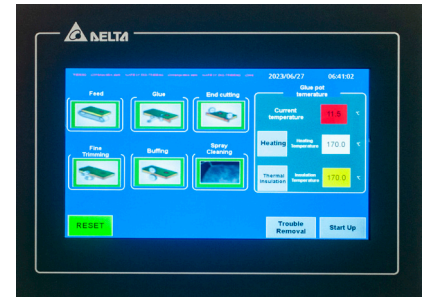
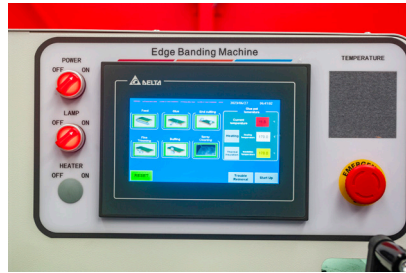
MAIN FUNCTIONS

- Loading of roll edging up to 3 mm thick with revolving coil holder plate 0 - 800 mm.
- PVC/ABS shear up to 3 mm.
- The glue tank is teflon-coated to allow easy cleaning and replacing of the glue; it is equipped with heating elements with adapt power.
- Loading of the roll edging up to 3 mm thick with revolving coil holder (0 - 800 mm)
- Loading of the strip edging up to 5 mm thick is manual;
- The thin strip materials can be loaded manually, one by one by the operator.

Control Panel

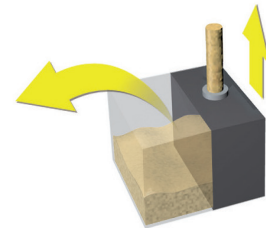
The management of the machine and its working units is performed by an electronic control PLC. On the screen the following data are displayed:

- Feed rate
- Glue tank temperature
- Program type selected by the operator
- Integrated simple and controlled diagnostic



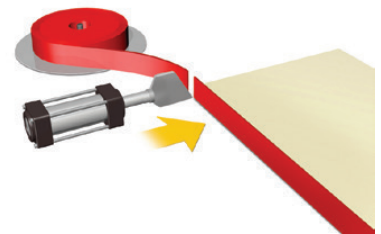
Glue Unit

Glue pot: EVA,
Adopt Teflon spray
technology, and scientific
glue back design.
Fast heating time



3 mm Shear

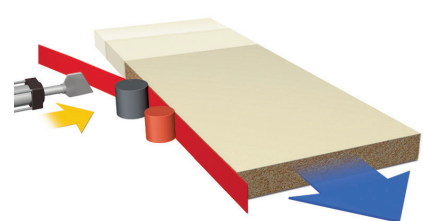
Shear for cutting PVC and
ABS up to 3 mm thick.



Pressure Rollers

Pneumatic design with two
wheels adjustable makes
pressing adjustment easier.

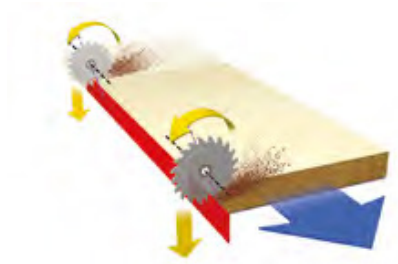
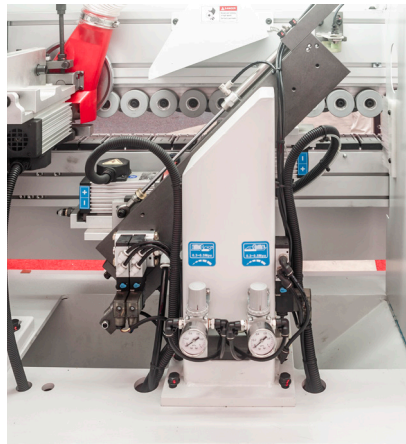
Can be adjusted according
to the thickness of the edge
tape.



End Trimming Unit

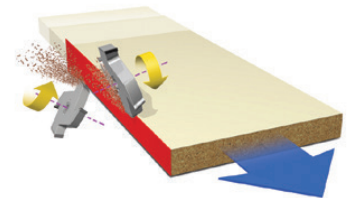
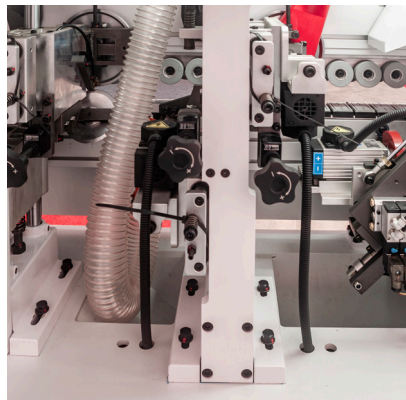
Adopt air pressure balance device to make the head more stable and easy to adjust.

The pneumatic design is optimized to reduce the noise and improve the efficiency of the cutting equipment.



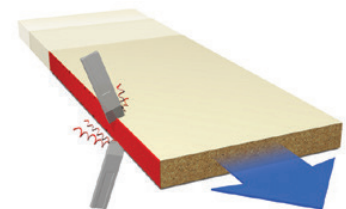
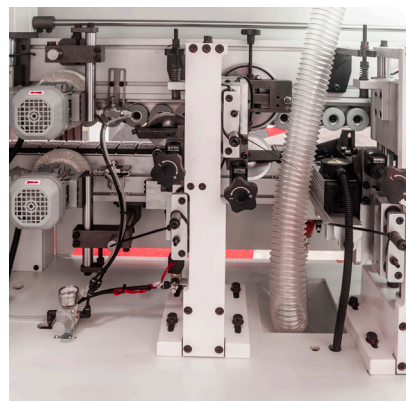
Heavy Duty Trimming Unit

The stable frame design is adopted to reduce the instability of trimming quality caused by the jitter of the tool during high speed cutting.



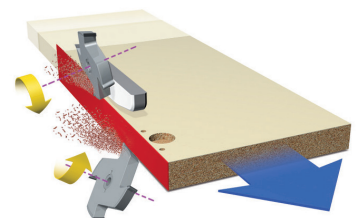
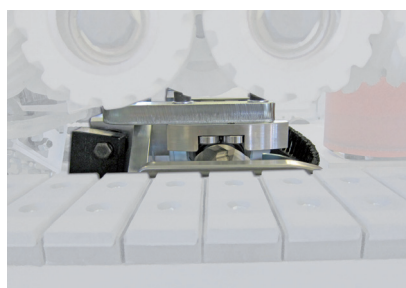
Scraping Unit

Finishing unit for PVC-ABS.



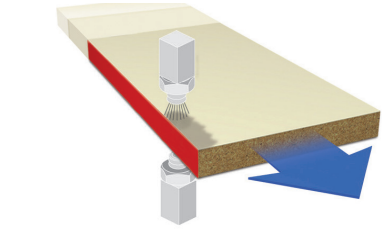
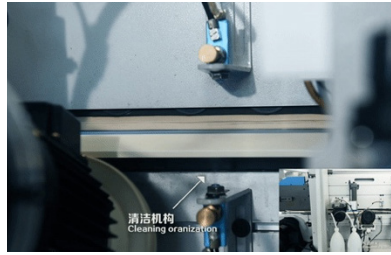
Copy Nesting

Permit processing of panels with holes up to diameter max. 35 mm



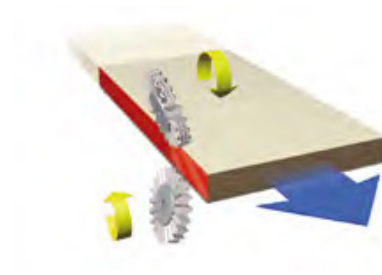
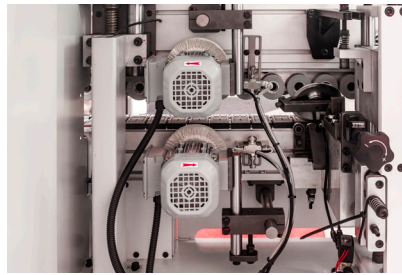
Cleaning Unit

The liquid spray helps the cleaning operation taking off the excess glue.



Buffers

Cloth wheels for panel cleaning and PVC edging polishing.



FARNESE EDGE BANDER FM310



TECHNICAL SPECIFICATIONS

DIMENSIONS OF INSTALLED MACHINE	METRIC
LENGTH	3450 mm
DEPTH	770 mm
HEIGHT	1650 mm
WEIGHT	1050 KG
PANEL THICKNESS	
STANDARD	10 to 50 mm
PANEL WIDTH	
MINIMUM	60 mm
PANEL LENGTH	
	Min 120 mm
EDGE WIDTH	
	12 to 48 mm
EDGE THICKNESS	
	0.4 - 3mm
FEED	
	16 m / min
WORKING AIR PRESSURE	
	6 .5KG
TOTAL POWER	
POWER REQUIRED	415V (+/-5%)
CONNECTIONS REQUIRED (SUPPLIED BY CUSTOMER) POWER, COMPRESSED AIR	
TOOLING CONSULT YOUR FARNESE MASTERWOOD DEALER FOR ANY TOOLING REQUIRED	

Owing to the constant updating of our designs, descriptions and technical data shown in our drawings and folders are not binding. Possible alterations deemed by the makers as convenient will be effected at any time without previous notice.

NOTES

QUOTATION

PRICE: \$ (plus GST)

PLEASE NOTE - QUOTE VALID FOR 30 DAYS ONLY FROM DATE OF QUOTE

Machine comes equipped with:

- As per above specifications

Included in the price -

- Delivery - Syd/Bris/Melb Metro only
- WA/NT/SA/TAS and all regional areas will incur additional cost
- Installation and Training
- Mobile Crane

Excluded from the price -

- Unloading of machine from truck
- Forklift - to unload truck and position machine - CUSTOMER TO SUPPLY
- Air connections to machines
- Power connection to machine
- Internet connection to the machine
- Personnel to assist installer at time of installation
- Concrete facilities
- Removal of existing machinery
- Accommodation and travel expenses for installer at time of installation - if required -outside of Metro areas

Limited Warranty Certificate

Farnese PTY LTD or Farnese Masterwood PTY LTD, ("Farnese" or "Manufacturer") provides a limited warranty on all new cutting saws, CNC centres, water recycling, lifting equipment, edge banders and edge polishers (collectively Stone processing and Woodworking Machinery) and their components (except those listed below under Limits and Exclusions of Warranty) ("Components") that are manufactured by Farnese and sold by Farnese as set forth in this Certificate. The warranty set forth in this certificate is a limited warranty, it is only warranty by Manufacturer, and is subject to the terms and conditions of this Certificate.

Limited Warranty Coverage

Each Machine and its Components (collectively, "Farnese Products") are warranted by Manufacturer against defects in material and workmanship. This warranty is provided only to an end-user of the Machine (a "Customer"). The period of this limited warranty is one (1) year. The warranty period commences on the date the Machine is installed at the Customer's facility by a Farnese technician. Warranty is void if the Customer, an unauthorized service technician or other unauthorized person installs the Machine.

1. Repair or Replacement Only

Manufacturer's sole liability and Customer's exclusive remedy under this warranty, with respect to any and all Farnese products, shall be limited to repairing or replacing, at the discretion of the Manufacturer, the defective Farnese product.

2. Disclaimer of Warranty

This warranty is the Manufacturer's sole and exclusive warranty and is in lieu of all other warranties of whatever kind or nature, express or implied, written or oral, including but not limited to, any implied warranty of merchantability, implied warranty of fitness for particular purpose or other warranty of quality or performance or non-infringement, except if applicable any consumer guarantees which are set out in the Australian Consumer Law. All such warranties of whatever kind are hereby disclaimed by Manufacturer and waived by Customer.

3. Limits and Exclusions of Warranty

Components subject to wear during normal use and over time, including but not limited to wood, panels, seals, bearings, cables, sensors, lasers, air, vacuum, hydraulic, electrical and water components are excluded from this warranty.

Manufacturer's specified maintenance procedures must be adhered to and recorded in order to maintain this warranty. Normal alignment, adjustment, level and machine settings to set table, blades and/or tooling is not covered by this warranty. This warranty is void if Manufacturer determines that (i) any Farnese Product was subjected to mishandling, misuse, abuse, neglect, accident, improper installation, improper maintenance, improper storage, or improper operation or application, including the use of improper fluids, (ii) any Farnese Product was improperly repaired or services by Customer, an unauthorized service technician, or other unauthorized person, (iii) Customer or any person makes or attempts to make any modification to any Farnese Product without the prior written authorization of Manufacturer, and/or (iv) any Farnese Product was used for non-commercial use (such as personal or household use). This warranty does not cover damage or defect due to an external influence or matters beyond the reasonable control of Manufacturer, including, but not limited to, theft, vandalism, fire, weather condition (such as rain, flood, wind, lightning, or earthquake), or acts of war or terrorism.

Without limiting the generality of any of the exclusions or limitations described in this Certificate, this warranty does not include any warranty that any Farnese Product will meet any persons production specifications or other requirements, or that operation of any Farnese product will be uninterrupted or error-free.

Manufacturer assumes no responsibility with respect to the use of any Farnese product by any person, and Manufacturer shall not incur any liability to any person for any failure in design, production, operation performance or otherwise of any Farnese Product, other than repair or replacement of same as set forth in the warranty above.

4. Limitation of Liability and Damages

Manufacturer will not be liable to Customer or any other person for any compensatory, incidental, consequential, punitive, special or other damage or claim, whether in an action, in contract, tort or other legal or equitable theory, arising out of or related to any Farnese product, other products or services provided by Manufacturer or an authorized distributor, service technician, or other authorized representative of Manufacturer (collectively, "authorized representative"), or the failure of parts or products made by using any Farnese Product, even if Manufacturer or any authorized representative has been advised of the possibility of such damages, which damage or claim includes, but is not limited to, loss of profits, lost data, lost products, loss of revenue, loss of use, cost of down time, business good will, any damage to equipment, premises, or other property of any person, and any damage that may be caused by a malfunction of any Farnese product. All such damages and claims are disclaimed by Manufacturer and waived by Customer. Manufacturer's sole liability, and Customer's exclusive remedy, for damages and claims for any cause whatsoever shall be limited to repair or replacement, at the discretion of Manufacturer, of the defective Farnese Product as provided in this warranty.

Customer has accepted the limitations and restrictions set forth in this Certificate, including, but limited to, the restriction on its right to recover damages, as part of its bargain with Manufacturer or its Authorized Representative. Customer realizes and acknowledges that the price of the Farnese Products would be higher if Manufacturer were required to be responsible for damages and claims beyond the scope of this warranty.

5. Miscellaneous

a. How to claim on this warranty

In order to claim under this warranty, the Customer should cease using the Farnese Produce and telephone the Manufacturer on 1300 075 678 for a Farnese technician to determine whether the matter is covered by this warranty.

If the matter is covered by this warranty, the cost to repair and or replace (being at the Manufacturer's discretion) will be borne by the Manufacturer, including transportation costs, except for electricians and external technicians as set out under "External warranty support" below.

If the matter is not covered by this warranty, then the Customer will be responsible for the cost to repair or replace.

b. Transportation & Rigging

Manufacturer assumes no liability for damages caused during the transportation and/or rigging of Machinery. Customer is solely responsible for noting damages on freight Bill of Lading upon delivery to initiate a claim directly with the Transportation Company and/or Rigging Company. The repair or replacement of components damaged during transit or rigging is not covered under this warranty.

c. Power Supply

Customer is solely responsible for supplying the required power to the Machine and having a certified electrician for direct connection. Manufacturer does not supply phase converter, transformer or surge protector if required to properly install Machine. If the proper power supply is not provided at the time of machine installation the warranty is void. Any resulting damage from the use of improper power supply is the liability of the Customer.

d. Part Shipping

Components verified by the Manufacturer to be replaced under warranty are shipped common carrier, FedEx or TNT Ground service or similar method. Manufacturer is not responsible for damage or loss caused by Freight Company or other circumstances not in the Manufacturer's control. Customer will incur the replacement cost of damaged or lost parts and the costs associated with a different shipping method if requested.

e. External warranty support

The customer is responsible for the costs associated with electricians and or technicians used to troubleshoot issues arising during the warranty period.

f. Parts Warranty & Return Policy

Farnese mechanical parts have a 30-day warranty from the date of purchase. This warranty is void if Manufacturer determines that any part was subjected to mishandling, misuse, abuse, neglect, accident, improper installation, improper maintenance, improper storage, or improper operation or application, including the use of improper fluids. Electrical parts are not covered by this parts warranty. Unless otherwise specified parts are not returnable after purchase.

g. Phone Support

Manufacturer provides ten (10) hours of phone support during the warranty period for non-warranty technical assistance. These hours expire if unused after the warranty period of one (1) year. Manufacturer is at its sole discretion to determine if the technical support required is considered warranty. Unlimited phone support is provided if the technical assistance has been approved under warranty by a Farnese technician. All other phone support including but not limited to general help, troubleshooting and training is charged after the 15-minute grace period. Calls are billed at \$150 per incident plus \$150 per hour in 30-minute increments. Manufacturer-supplied electrical diagrams are to be followed by a certified electrician if electrical components require testing. The cost to hire an electrician is the sole responsibility of the Customer and not covered under this warranty. Any non-warranty technical support required by the Customer or certified electrician will be billed at the \$150 per incident plus \$150 per hour in 30-minute increments.

h. Software Updates

Software updates are free of charge for the first year under warranty. After warranty software updates can be purchased from the Manufacturer.

i. Training

Manufacturer recommends Team Viewer to assist our Customers with live internet-based training. This service is provided as needed for our Customers. Calls are billed at \$150 per session plus \$150 an hour for all support over 60 minutes. To schedule a meeting call 1300 075 678 Manufacturer offers onsite training and support for our Customers. To schedule a meeting, email us at info@farnese.com.au or call 1300 075 678 to schedule the onsite training day(s) and one of our trained technicians will be happy to visit your facility. Training is billed at \$1,200/day plus all travel expenses.

j. Service & Preventative Maintenance

Manufacturer will provide a service estimate based on the anticipated hours to troubleshoot the issues presented or part installation needs. Service work performed is billed at \$150 an hour plus all travel expenses.

Manufacturer recommends preventative maintenance be done every six (6) months. This comprehensive service inspects the major components of the machine and helps prevent future down time. Preventative maintenance is billed at \$1,200/day plus all travel expenses.

6. Safety Precautions

Customer shall require all of its machine operators and surrounding people to use all safety devices, guards and follow proper safe operating procedures as set forth in manuals and instruction sheets furnished by Manufacturer. Customer shall not remove or modify any such device, guard or sign. It is Customers responsibility to provide all the means that may be necessary to effectively protect him/herself, all people around the machine and employees from serious bodily injury which otherwise may result from the method of particular use, operation, set-up or service of the equipment. If Customer fails to comply with such provisions of this paragraph or the applicable standards or regulations aforementioned, Customer shall indemnify and save Manufacturer harmless from and against any and all claims, losses or damages arising there from. It is the responsibility of Customer to comply with any and all local safety codes.

7. Entire Agreement

This Certificate is the entire agreement between the Manufacturer and the Customer with respect to the subject matter of this Agreement. The terms of this Certificate may not be changed in any way except in writing, signed by Manufacturer and the Customer. Modification, Captions and Construction. This Certificate may not be modified in any respect by any verbal statement, representation, or agreement made by the Manufacturer, or by a written document, unless signed by an authorized officer of the Manufacturer. The captions contained in this Certificate are provided for convenience of reference only and shall not be deemed to constitute a part of this Certificate. This Certificate shall be interpreted without regard to any presumption or rule requiring construction against the party who drafted the Certificate.

8. Savings Clause

To the extent that any provision of this Agreement is judicially determined to be invalid, unlawful or unenforceable, that provision shall be modified to the extent such a court in its discretion deems necessary in order to bring such provision into compliance with the laws of New South Wales and of Australia as applicable. The remainder of the Agreement shall continue in full force and effect, provided that such modification does not render this Agreement void for lack of consideration by a party.

9. Choice of Law and Forum

This Certificate is deemed to have been made in Sydney, Australia and the laws of New South Wales, exclusive of the choice of law provisions, shall govern this Agreement without regard to the place of execution or the place of performance of this Agreement. Any dispute concerning or relating to this Certificate shall be filed and litigated in the court of Campbelltown, New South Wales, and nowhere else.

We Know That Support Is Important To You

Buying a new machine is a big commitment for anyone, and continued support throughout the life of that machine is vital.

Being an Australian company, Farnese Masterwood carry a vast array of parts here in Australia to ensure that your machine always has the spares it needs. Enjoy peace of mind knowing that you'll be fully supported by Farnese Masterwood and we'll always have you covered.

Customers don't need to experience unnecessary machinery downtime waiting for remote assistance from other countries, as all the support and remote assistance is provided locally in Australia from our own qualified Technicians in Australian time.

With more Service Technicians in Australia than any of our competitors, our mission here at Farnese Masterwood is to give you the best support in the industry. As we grow, we continue to recruit more and more qualified technicians, to further strengthen our position in the marketplace.

Farnese Masterwood Australia Pty Ltd
Head Office: 5 Heald Road, Ingleburn NSW 2565 Australia

ABN: 36 052 828 217

PH 1300 075 678 info@farnese.com.au