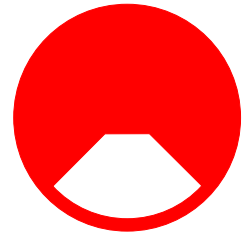
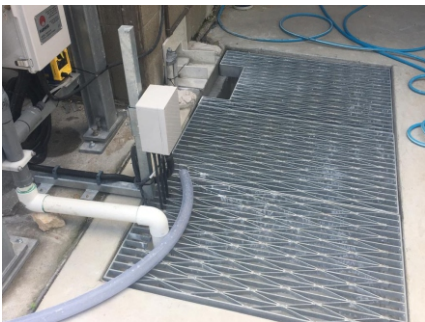


# SILO 2500

The perfect water recycling for small shops



The SILO 2500 is a compact system for the quick removal of mud from your recycled water. The SILO 2500 is specially fitted out to quickly and continuously decant the mud and sludge from your underground pit.



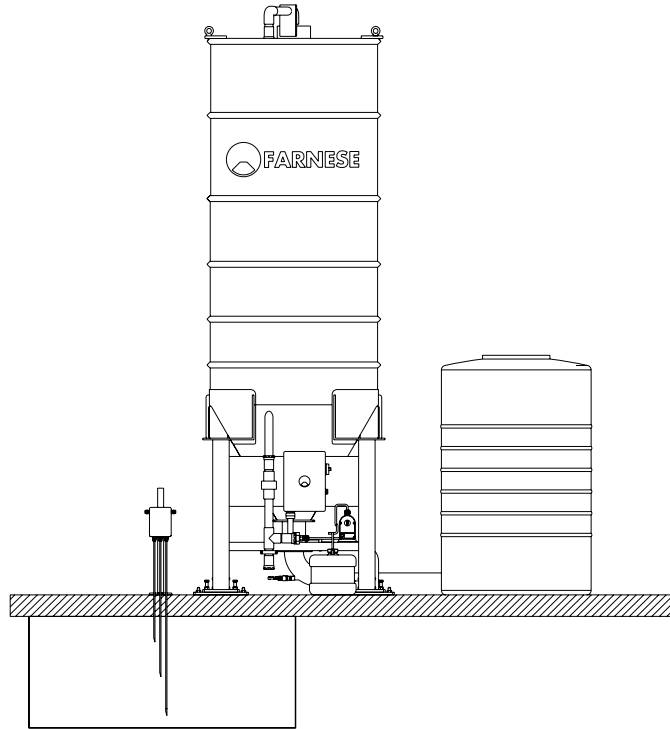
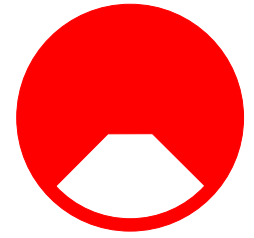
The system consists of a 2500 litres galvanized steel silo, sludge collection bags and stand and a pit pump. The Silo also includes a flocculant system which adds a mixing technique that promotes sludge to flow through your system without it forming a cake and clogging the filtration system.

Farnese recommends a 2000 to 5000 litres storage tank to receive the decanted water from the silo to complete the cycle and a sludge pit to collect the waste water to be processed.



# SILO 2500

The perfect water recycling for small shops



## TECHINICAL SPECIFICATIONS

### DIMENSIONS OF INSTALLED EQUIPMENT

(SUGGESTED)	METRIC	IMPERIAL
WIDTH	1200 mm	47.2 in
DEPTH	1200 mm	47.2 in
HEIGHT	3500 mm	137.8 in
WEIGHT	600 kg	1320.0 lb

\*LAYOUT CAN BE MODIFIED ACCORDING WITH CUSTOM SHOP\*

### FEATURES & FEEDS

MIXING STATION	NO	NO
FOCCULANT UNIT (SMALL)	YES	YES
WATER TANKS	SUPPLIED BY CUSTOMER	
MUD DECANTING STATION	YES   4 BAGS	YES   4 BAGS
PUMP TO THE MACHINES	SUPPLIED BY CUSTOMER	
SUBMERSIVE PUMP	YES	YES
AUTOMATED PUMP CONTROL	YES	YES
MANUAL EXIT BALL VALVE	YES	YES
POWER REQUIRED	400V 3ph 50Hz	208V 3ph 60Hz
	1A + Neutral	2A

\*CONNECTIONS REQUIRED (SUPPLIED BY CUSTOMER)

POWER, WATER, COMPRESSED AIR.

\*WATER TANKS AND PLUMBING TO BE SUPPLIED BY CUSTOMER



[www.farnese.com.au](http://www.farnese.com.au)

Owing to the constant updating of our designs, descriptions and technical data shown in our drawings and folders are not binding. Possible alterations deemed by the makers as convenient will be effected at any time without previous notice.